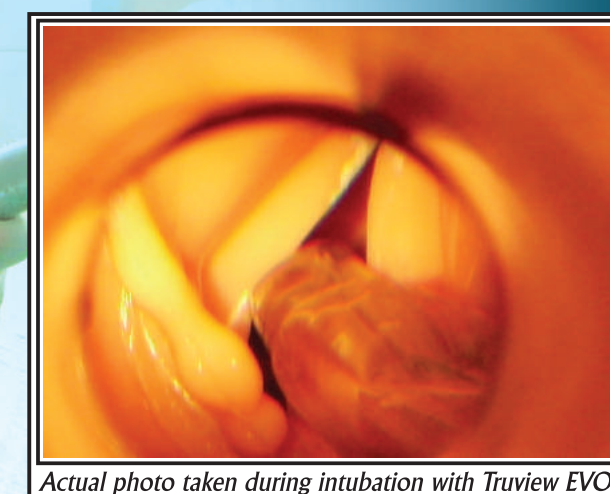


Truview EVO2

New generation intubation devices

TRUVIEW EVO2 and TRUVIEW PREMIER INTUBATION TRAINER KIT.

- Makes difficult cases easier to intubate
- Provides full visualization for correct ETT placement
- Indicated in cases involving cervical spine trauma and limited neck extensions
- Reduces patient trauma and side effects
- Continuous oxygen insufflation extends 'window of intubation'
- Suitable for teaching and training
- Digitally records laryngeal view



Actual photo taken during intubation with Truview EVO2

ORDERING INFORMATION

SHUCMAN 2 VERSION CODES	PRODUCT	DESCRIPTION	GREEN SPEC 2 VERSION CODES
5164E2S/	Truview™ EVO2 set	Contains one Adult blade, one medium handle and one OptiShape™ stylet	4164E2S/
5161E2S/	Truview™ EVO2 set	Contains one Small blade, one mini handle and one OptiShape™ stylet	4161E2S/
5162E2S/	Truview™ EVO2 Maxi-set	Contains one Adult blade, one Small blade, one medium handle, one mini handle, two OptiShape™ stylets	4162E2S/
5136	Truview Premier Intubation Trainer Kit	Contains one Adult blade, one Small blade, one medium handle, one mini handle, two OptiShape™ stylets and one Premier display unit in an attractive case	4136
410003E/	Optical view tube		410003E/
510102 - sm ad 510402E - adult	FibreClip™ light guides	pack of 2	410102 - sm ad 410402E - adult
410001	OptiShape™ stylet	Size 5-6.5	410001
410004	OptiShape™ stylet	Size 7-9.5	410004
5571	Handle	Medium size	4211X
5572	Handle	Mini size	4212X
	Rechargeable Handle	Medium size, batteries not included	4211X-R
	Rechargeable Handle	Mini size, batteries not included	4212X-R
	Xenon Bulbs - 2.5v	Box of 6	512501/6
	Xenon Bulbs - 3.5v For rechargeable handles	Box of 6	513501/6
4120	Premier Display Unit	Digital Image Display Attachment	4120

From Truphatek's Warranty Statement

"Truphatek® laryngoscope blades carry a 5-year warranty on stainless steel parts against defects in manufacture and materials. FibreClip™ fibre optic light guides are guaranteed for 15 months use from date of manufacture, as it appears embossed on the base of the light guide. Optical view tubes are guaranteed against defects in manufacture and materials for 12 months from date of manufacture, as it appears etched on side of the optical view tube.

No warranty applies to Premier image display unit other than that specified by the manufacturer. Full text of Truphatek's warranty can be viewed at our website www.truphatek.com or by request from Customer Services at helpdesk@truphatek.com

Truview™ is protected by USP 5,873,818, EP 1 031 315 A1 and related patents. Truview EVO2™, Truview™ Premier Intubation Trainer Kit, FibreClip™ and OptiShape™ are trademarks of Truphatek® and should not be used without prior written permission from Truphatek® International Ltd., Israel

Distributed by

TRUPHATEK®
www.truphatek.com

Truphatek International Ltd. P.O. Box 8051 Netanya 42504, Israel
Tel: 972-9-8851155, Fax: 972-9-8851212, e-mail: helpdesk@truphatek.com
© 2005-2008 TRUPHATEK® All rights reserved TVE2-01-02/08 Rev 5

Shucman version conforms to ISO 7376-1 and ASTM F 965-99
Green Spec version conforms to ISO 7376-3 and ASTM F 1195-99
Approvals - ISO 9001, ISO 13485
FDA registered manufacturer
Patented

CE **TRUPHATEK®**



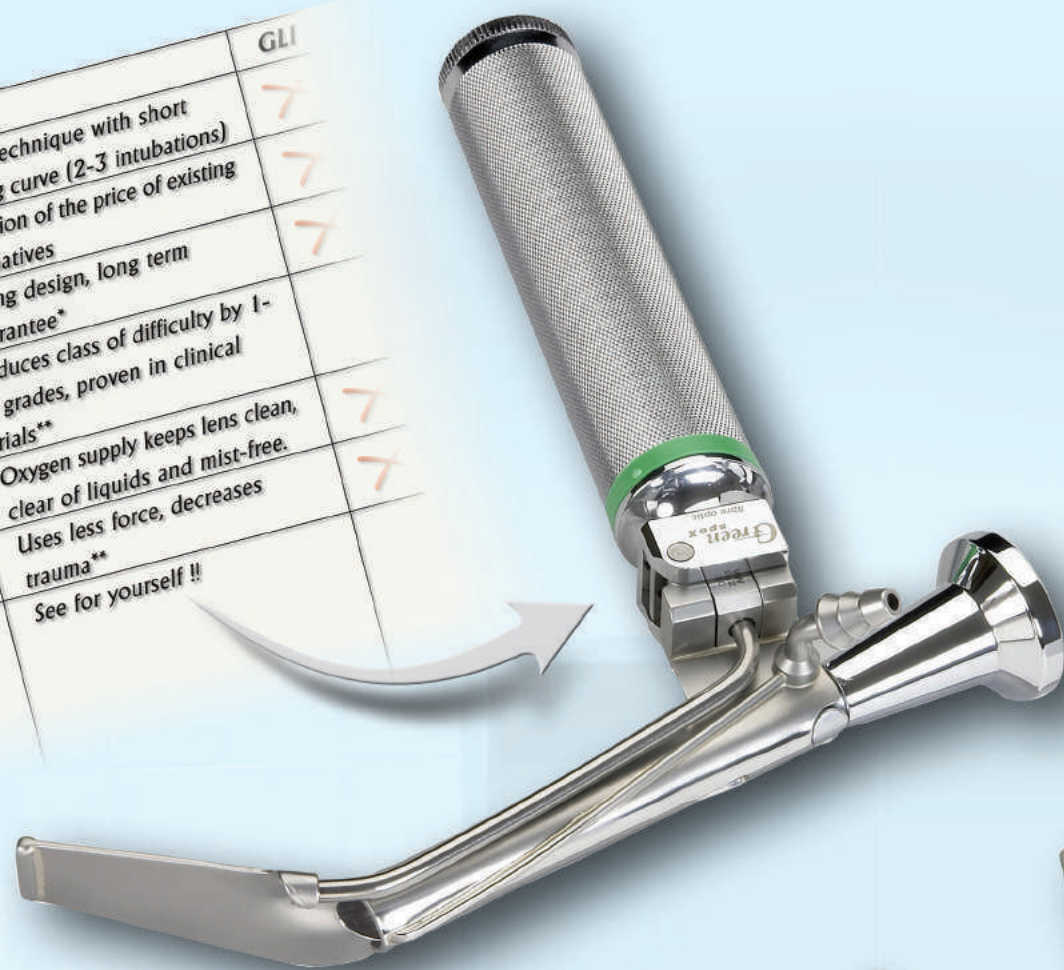
"The ideal scope of the future will be..."

Dr. Richard M. Cooper states: ⁽¹⁾



Intubation Trainer Kit

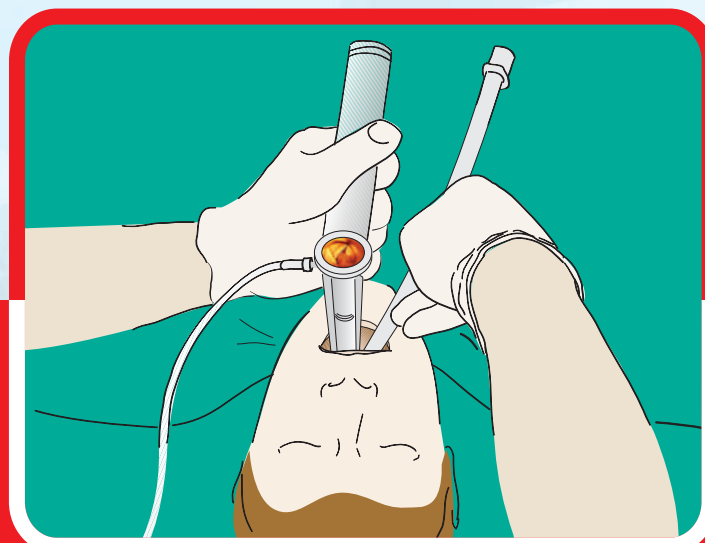
	Truview EVO2	GLI
Easy to learn/teach	✓	✓
Easy to acquire (inexpensive)	✓	✓
Easy to maintain (durable)	✓	✓
Perform predictably	✓	✓
Able to deal with secretions	✓	✓
Minimize stress to the patient	✓	✓
Allow visual control of ETT passage through the vocal cords	✓	✓



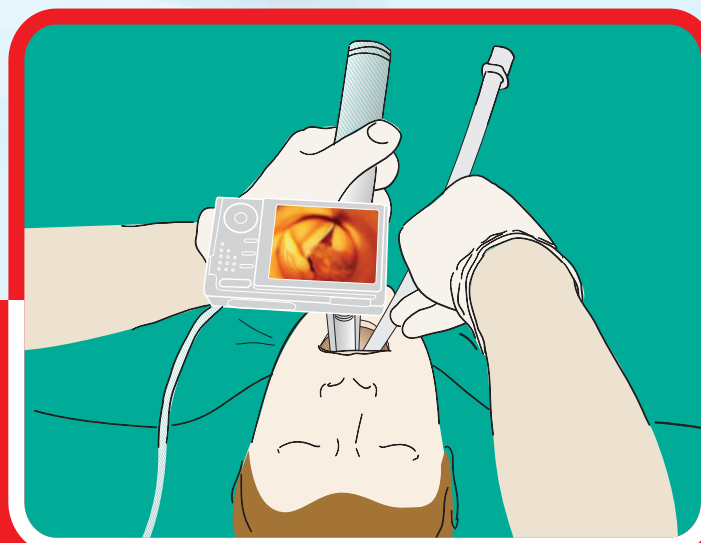
TEACHING TOOL SET

⁽¹⁾ Richard M. Cooper BSc, MSc, MD, FRCSC
Associate Professor, University of Toronto Hospital.
Testimonial as quoted in www.saturnbiomedical.com

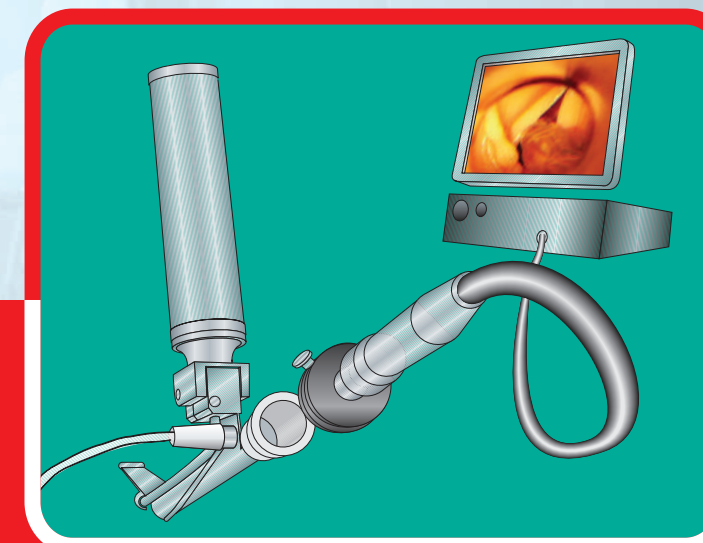
TRUVIEW EVO2 FULL VERSATILITY:



USE TRUVIEW EVO2 ALONE



USE TOGETHER WITH PREMIER DISPLAY UNIT



USE WITH CCD ENDOSCOPIC CAMERA AND MONITOR